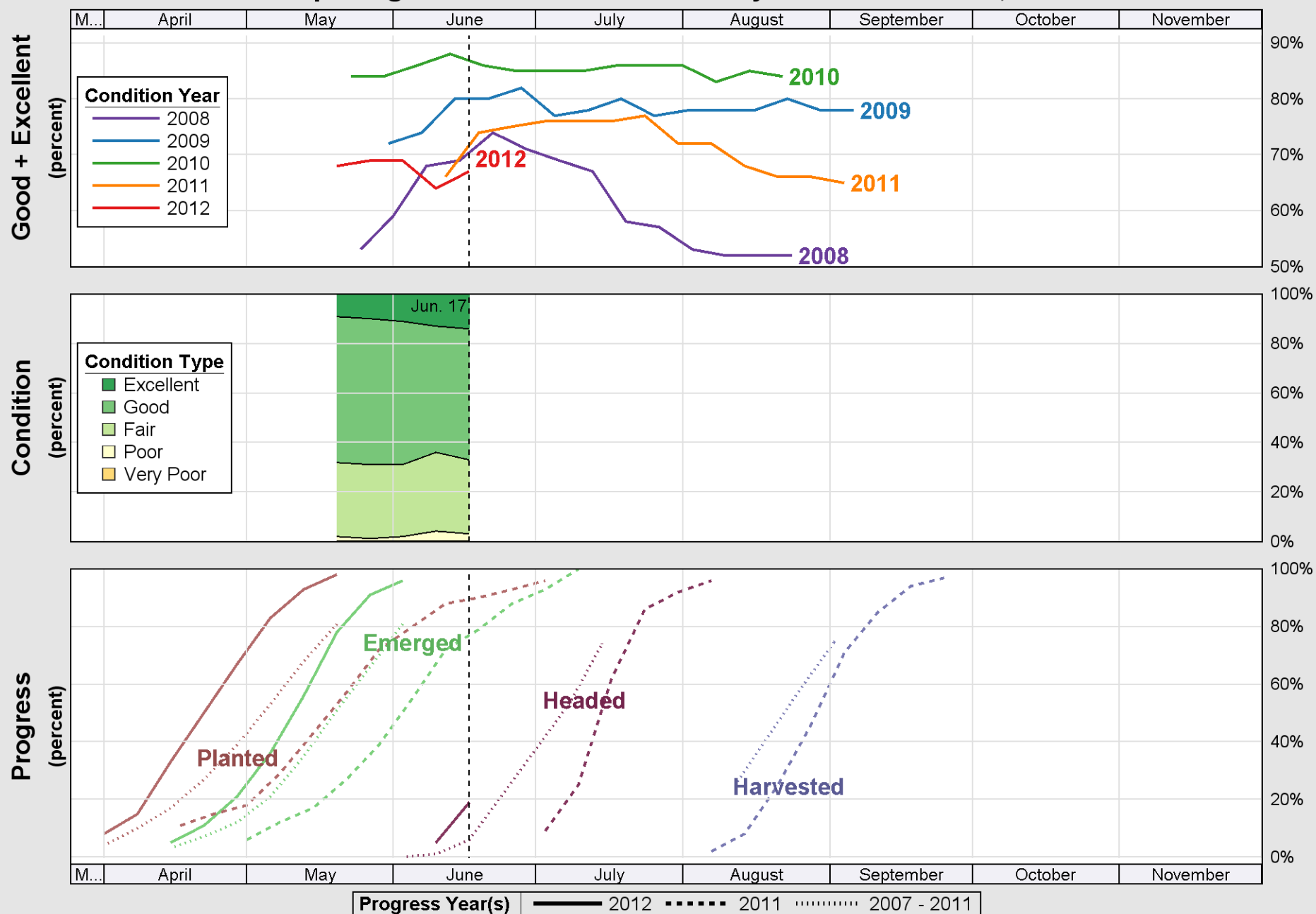


USDA

Crop Progress and Condition: Barley in United States , 2012

NASS

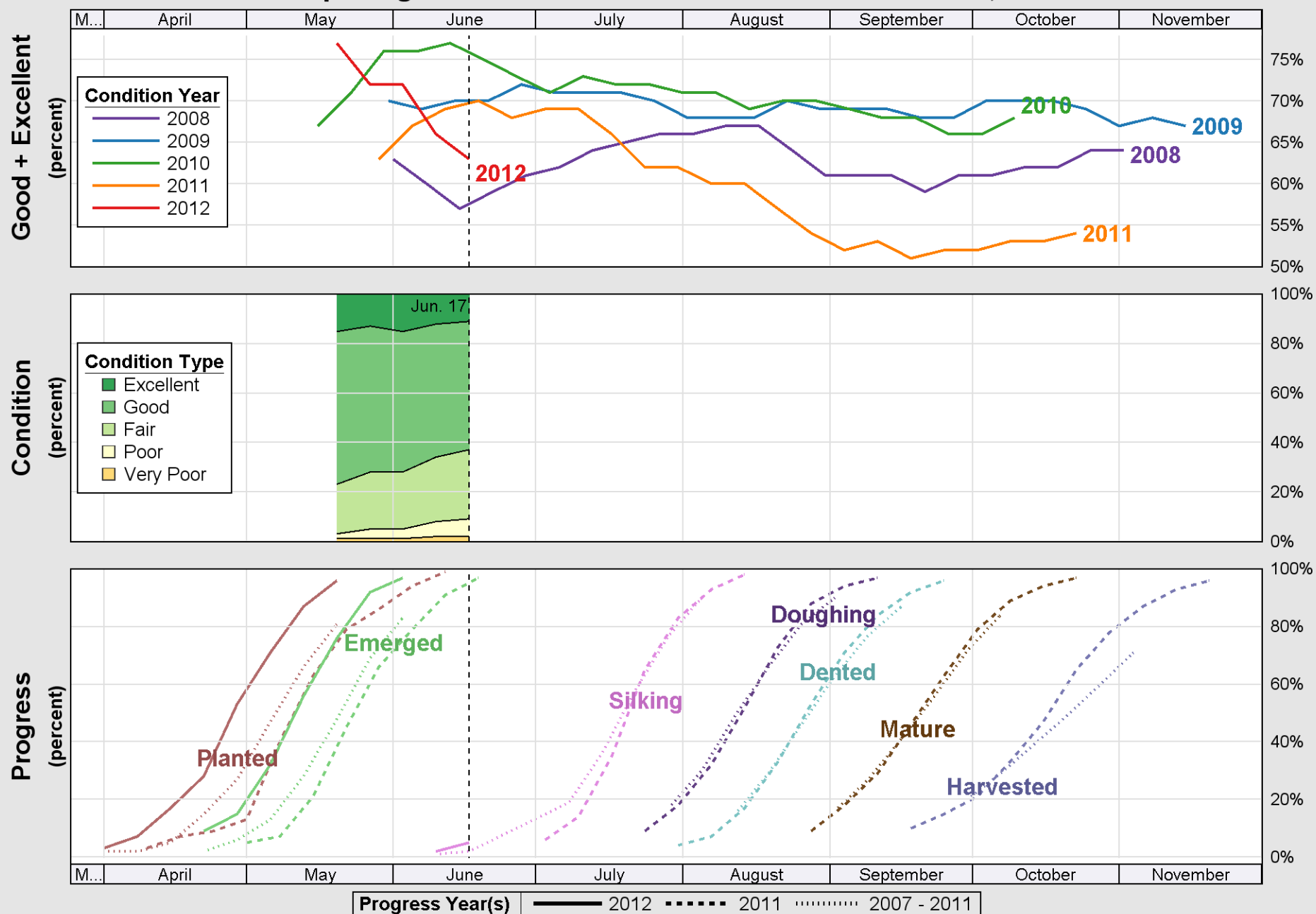


Source: National Agricultural Statistics Service (NASS), Crop Progress Report

USDA

Crop Progress and Condition: Corn in United States , 2012

NASS

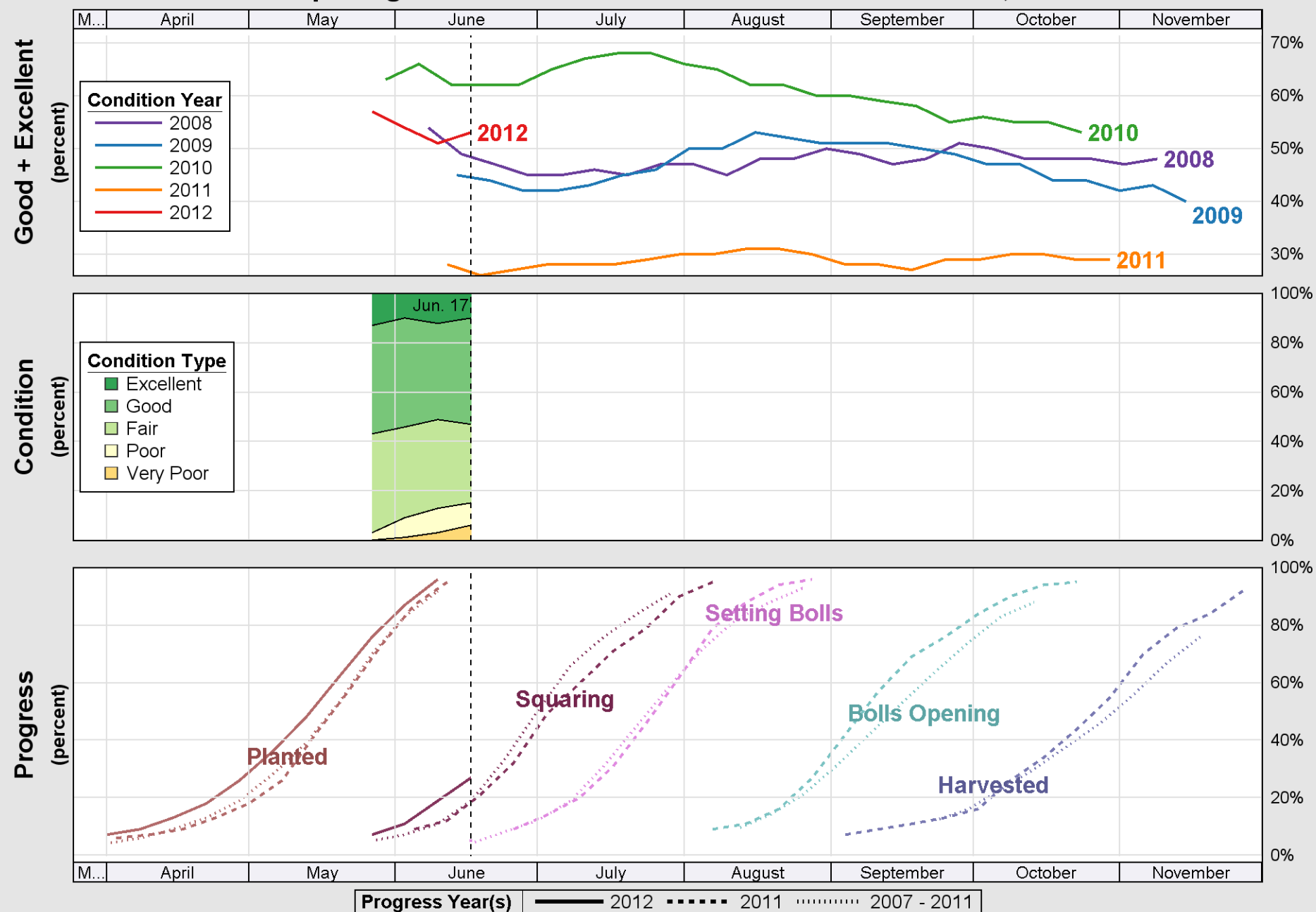


Source: National Agricultural Statistics Service (NASS), Crop Progress Report

USDA

Crop Progress and Condition: Cotton in United States , 2012

NASS

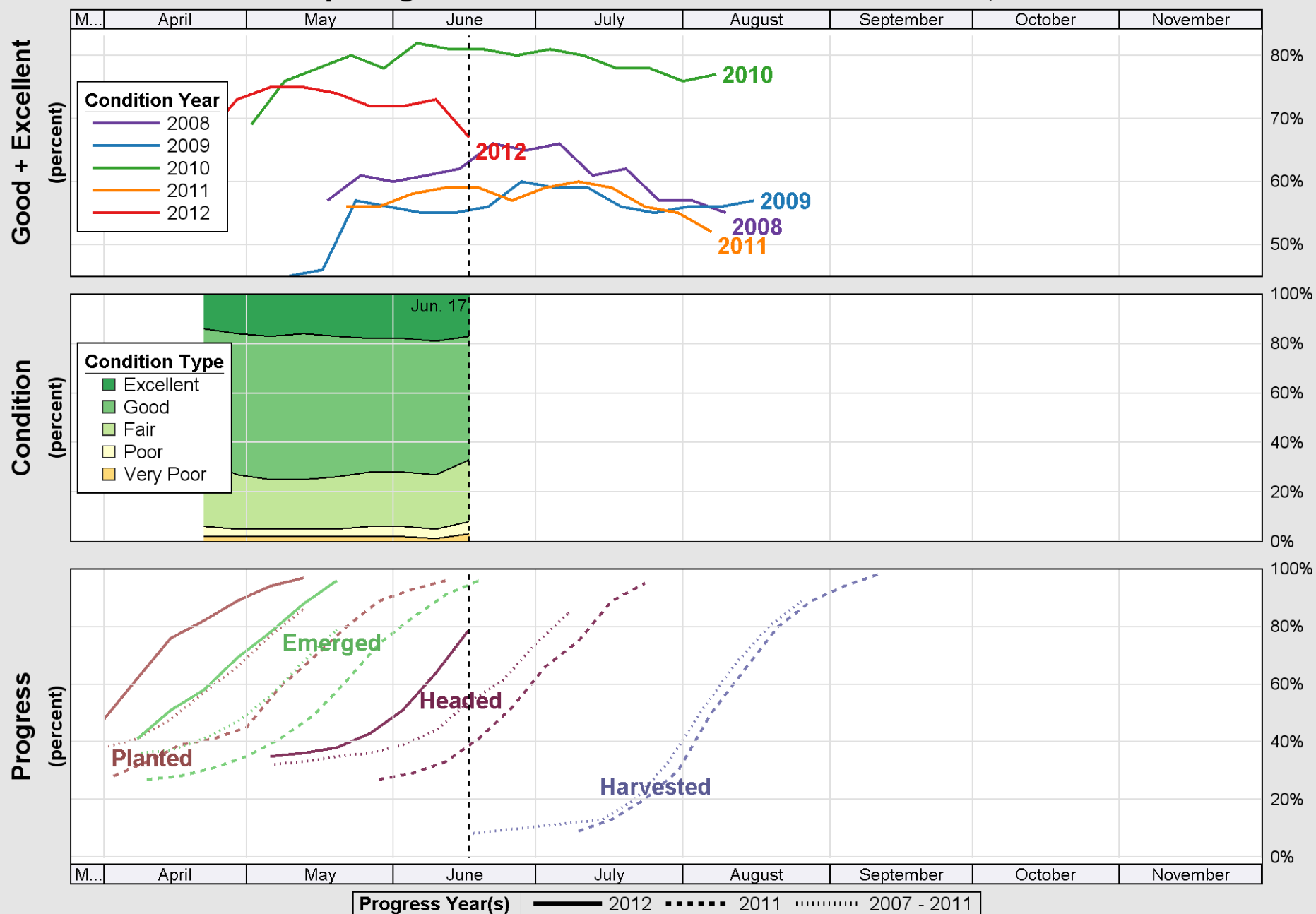


Source: National Agricultural Statistics Service (NASS), Crop Progress Report

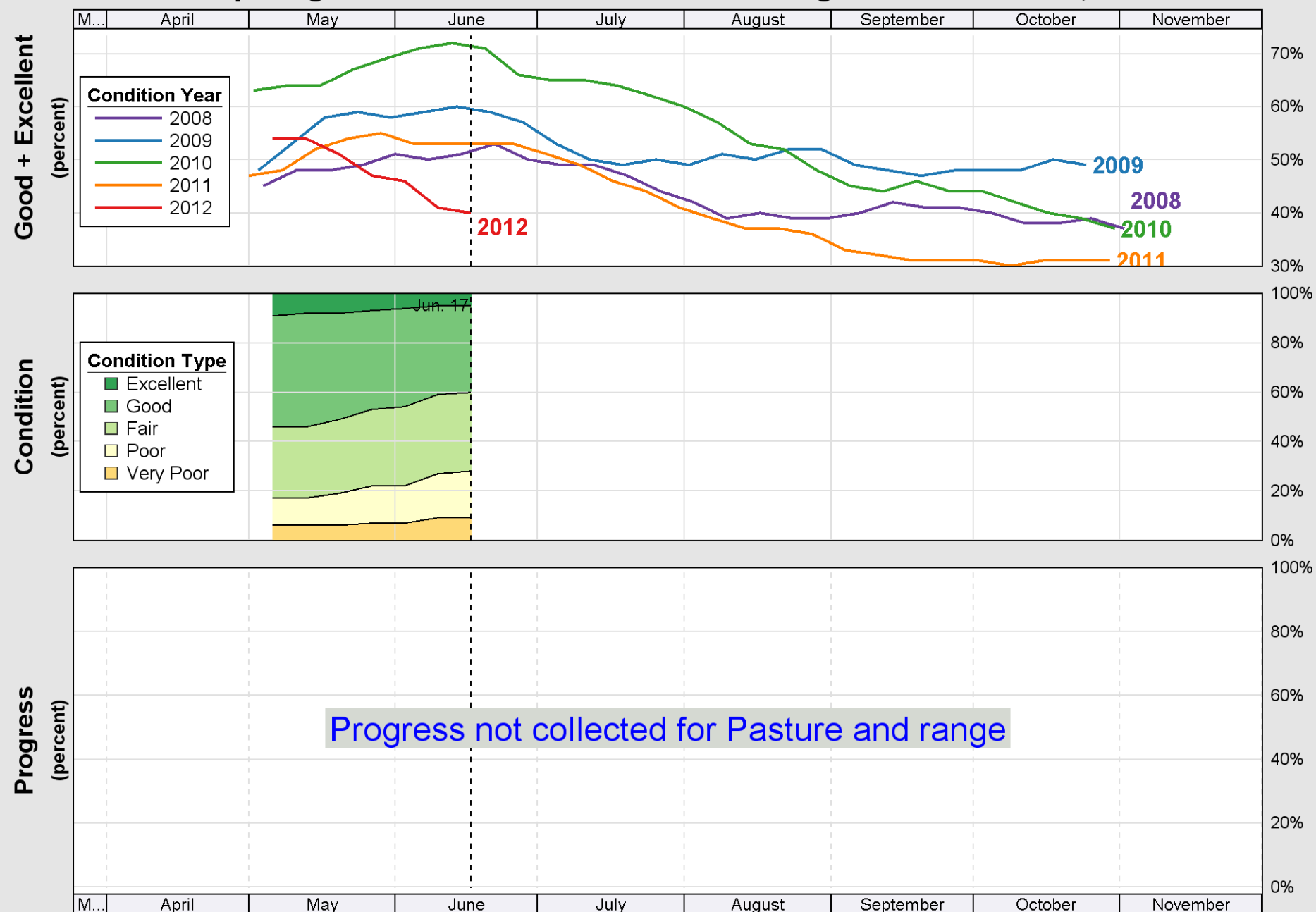
USDA

Crop Progress and Condition: Oats in United States , 2012

NASS



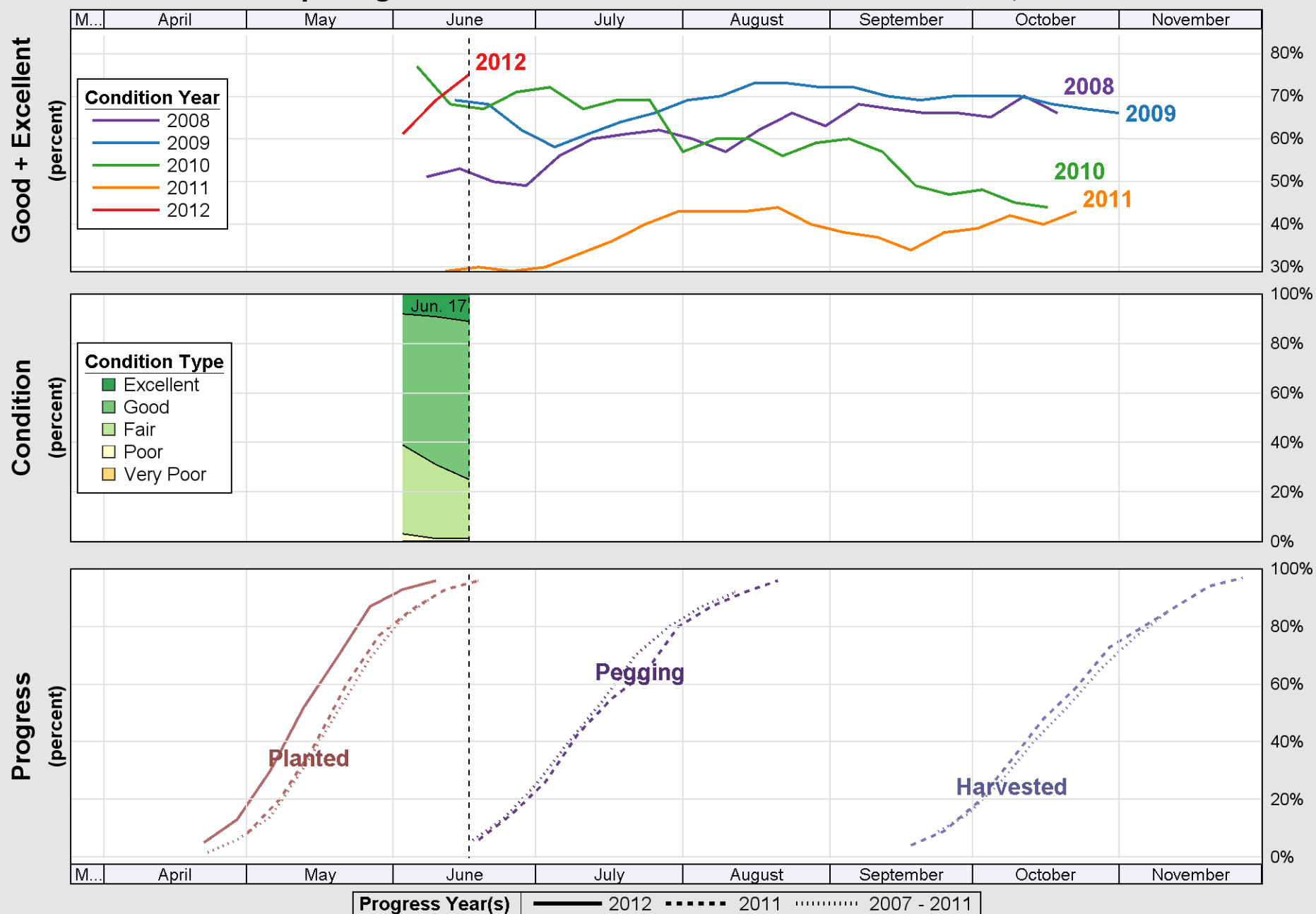
Source: National Agricultural Statistics Service (NASS), Crop Progress Report



USDA

Crop Progress and Condition: Peanuts in United States , 2012

NASS

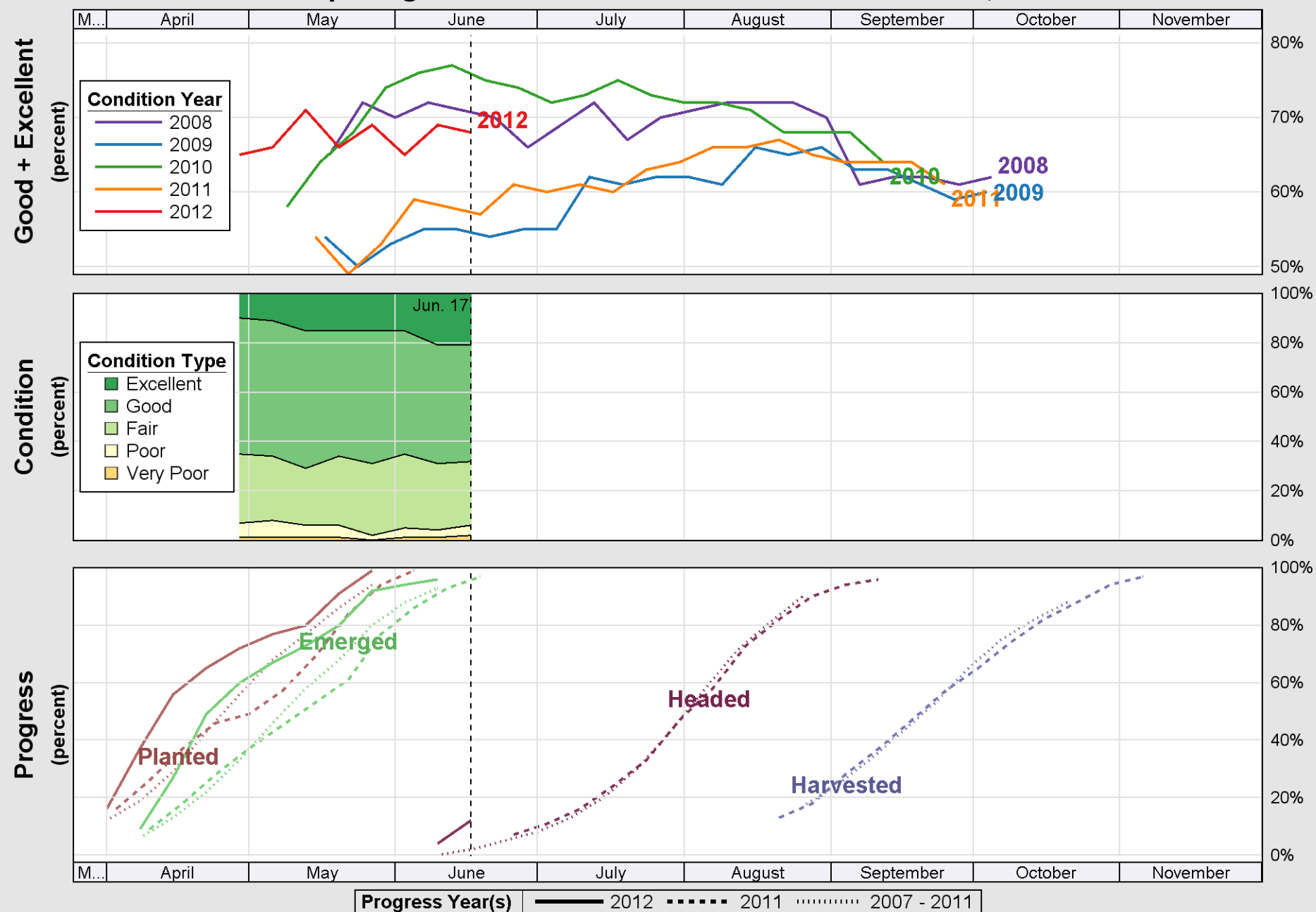


Source: National Agricultural Statistics Service (NASS), Crop Progress Report

USDA

Crop Progress and Condition: Rice in United States , 2012

NASS

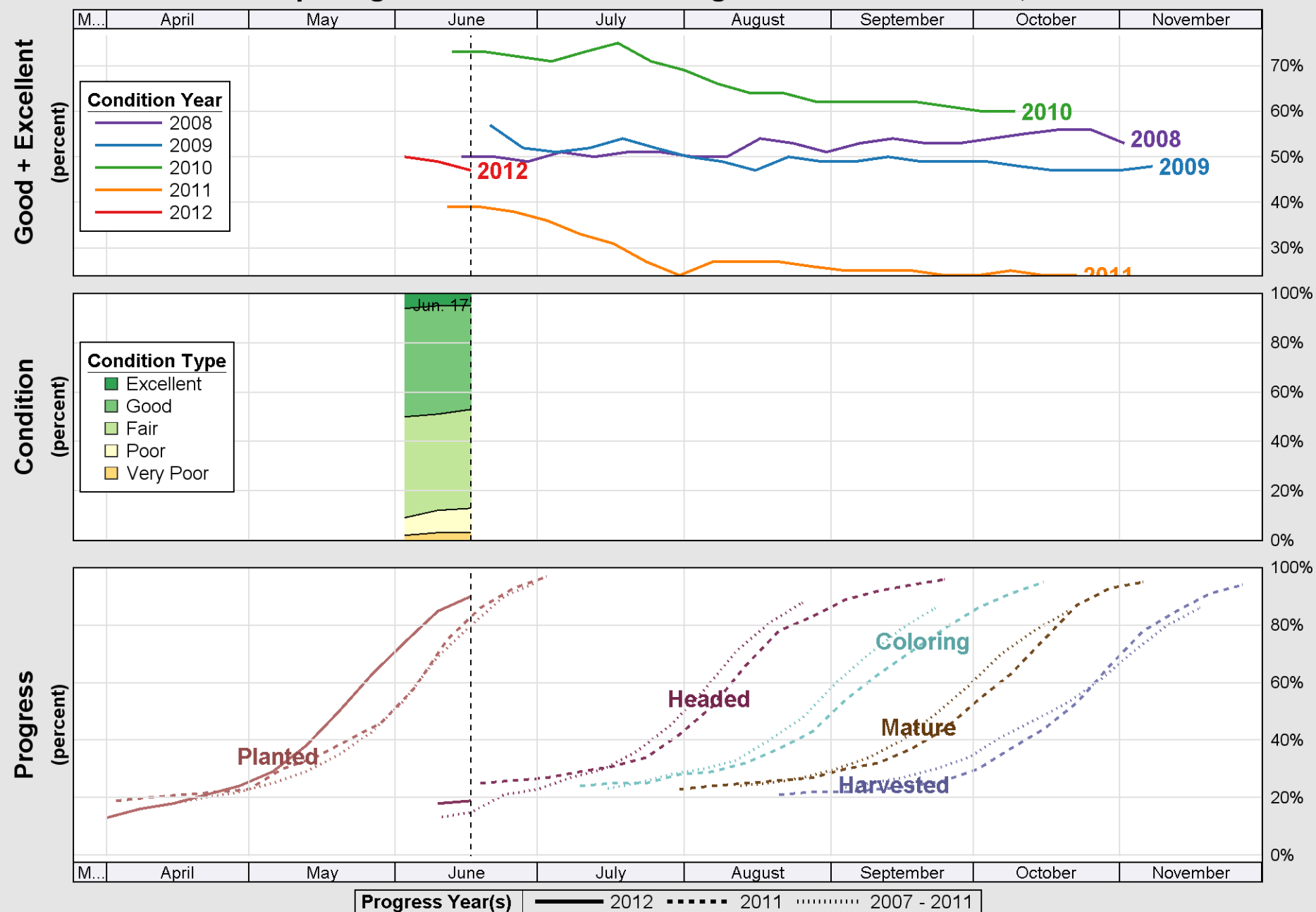


Source: National Agricultural Statistics Service (NASS), Crop Progress Report

USDA

Crop Progress and Condition: Sorghum in United States , 2012

NASS

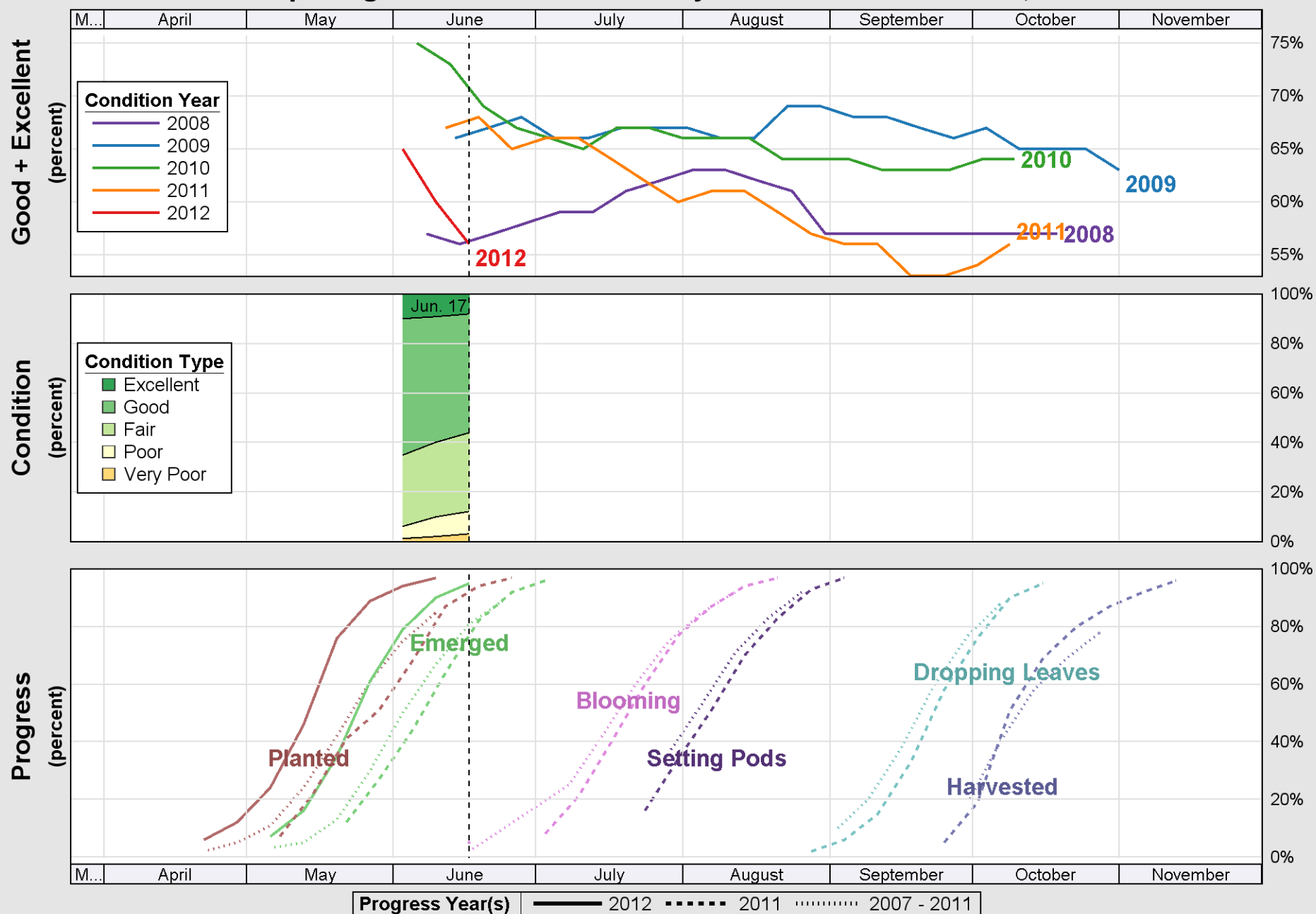


Source: National Agricultural Statistics Service (NASS), Crop Progress Report

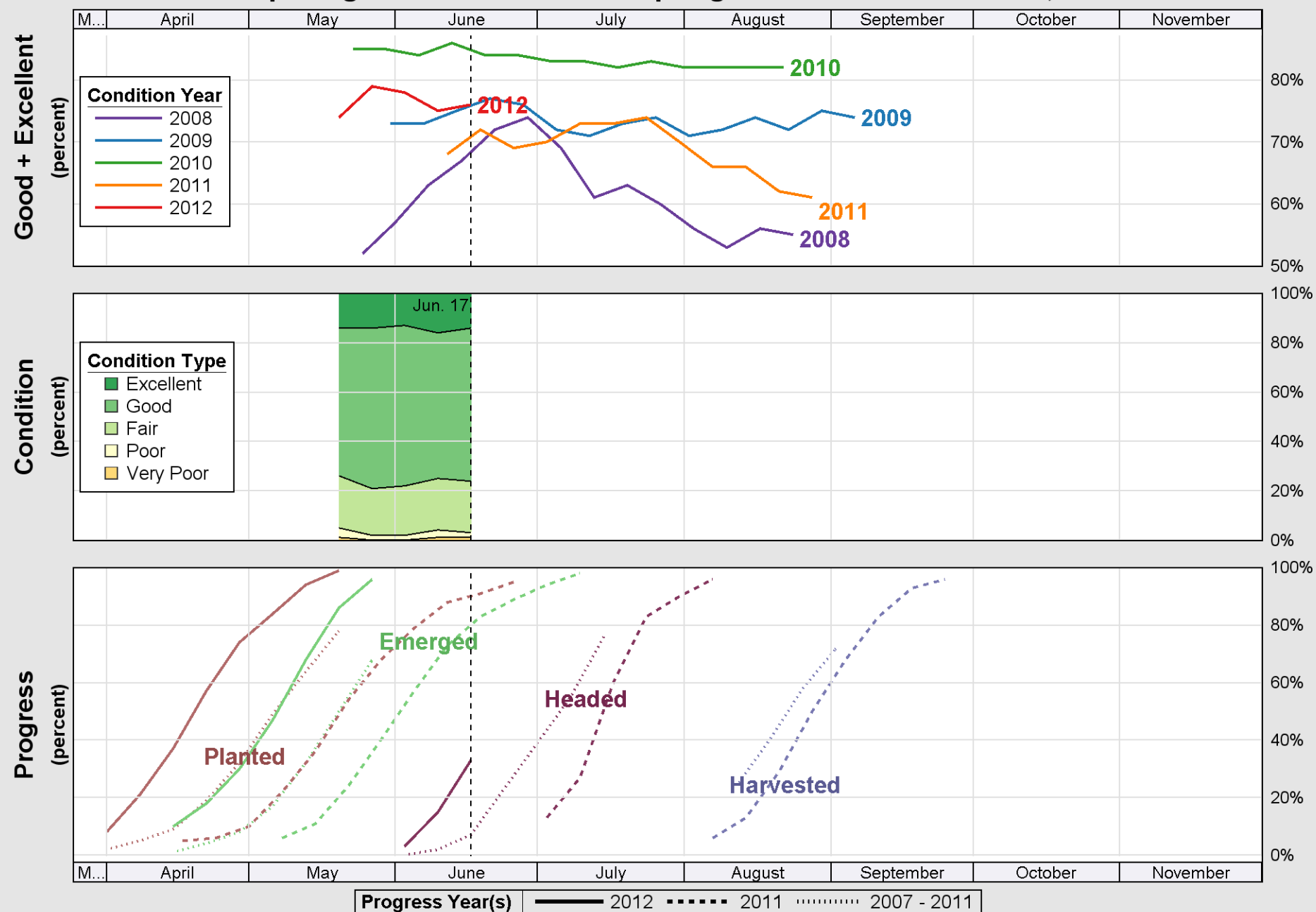
USDA

Crop Progress and Condition: Soybeans in United States , 2012

NASS



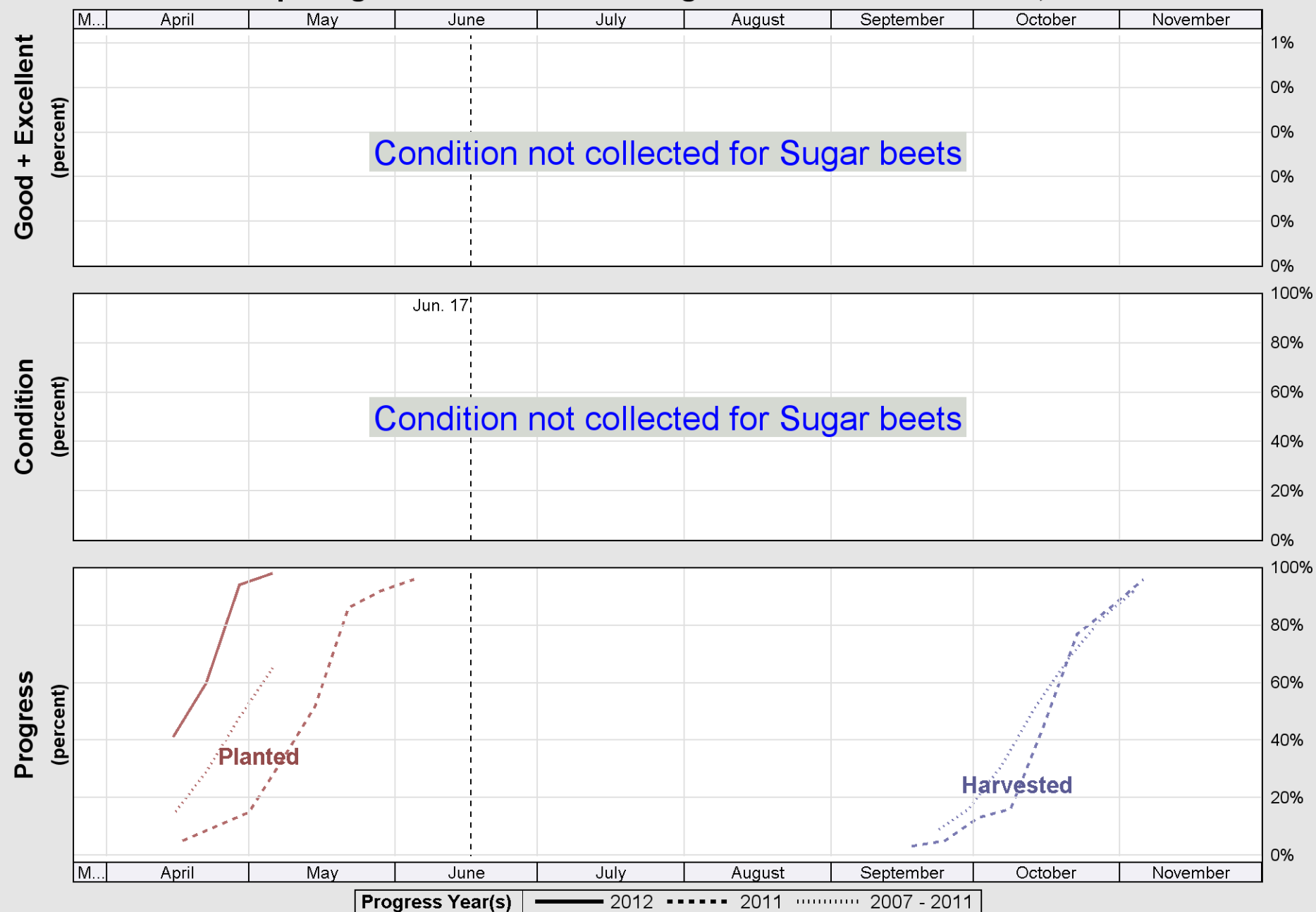
Source: National Agricultural Statistics Service (NASS), Crop Progress Report



USDA

Crop Progress and Condition: Sugar beets in United States , 2012

NASS

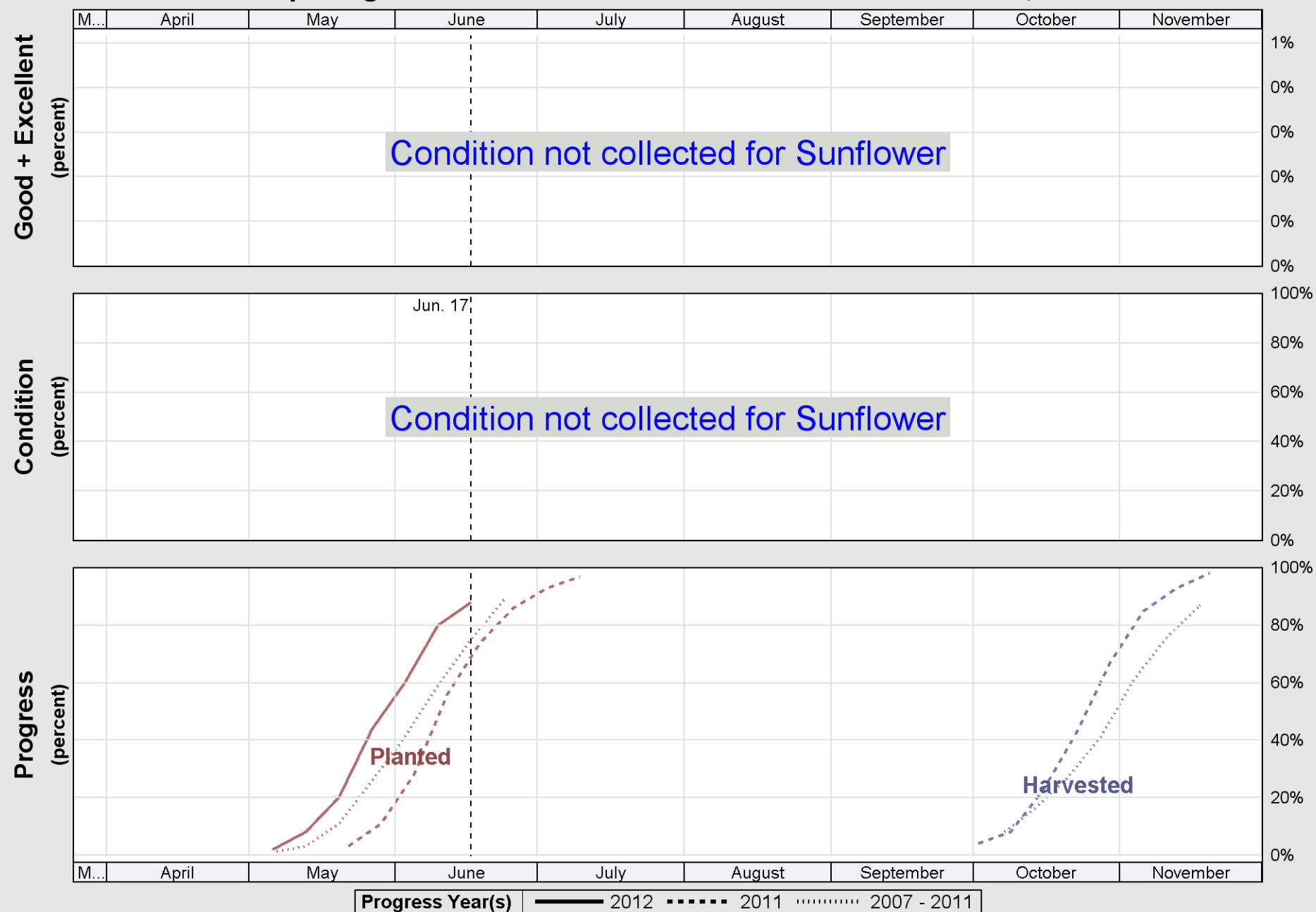


Source: National Agricultural Statistics Service (NASS), Crop Progress Report

USDA

Crop Progress and Condition: Sunflower in United States , 2012

NASS

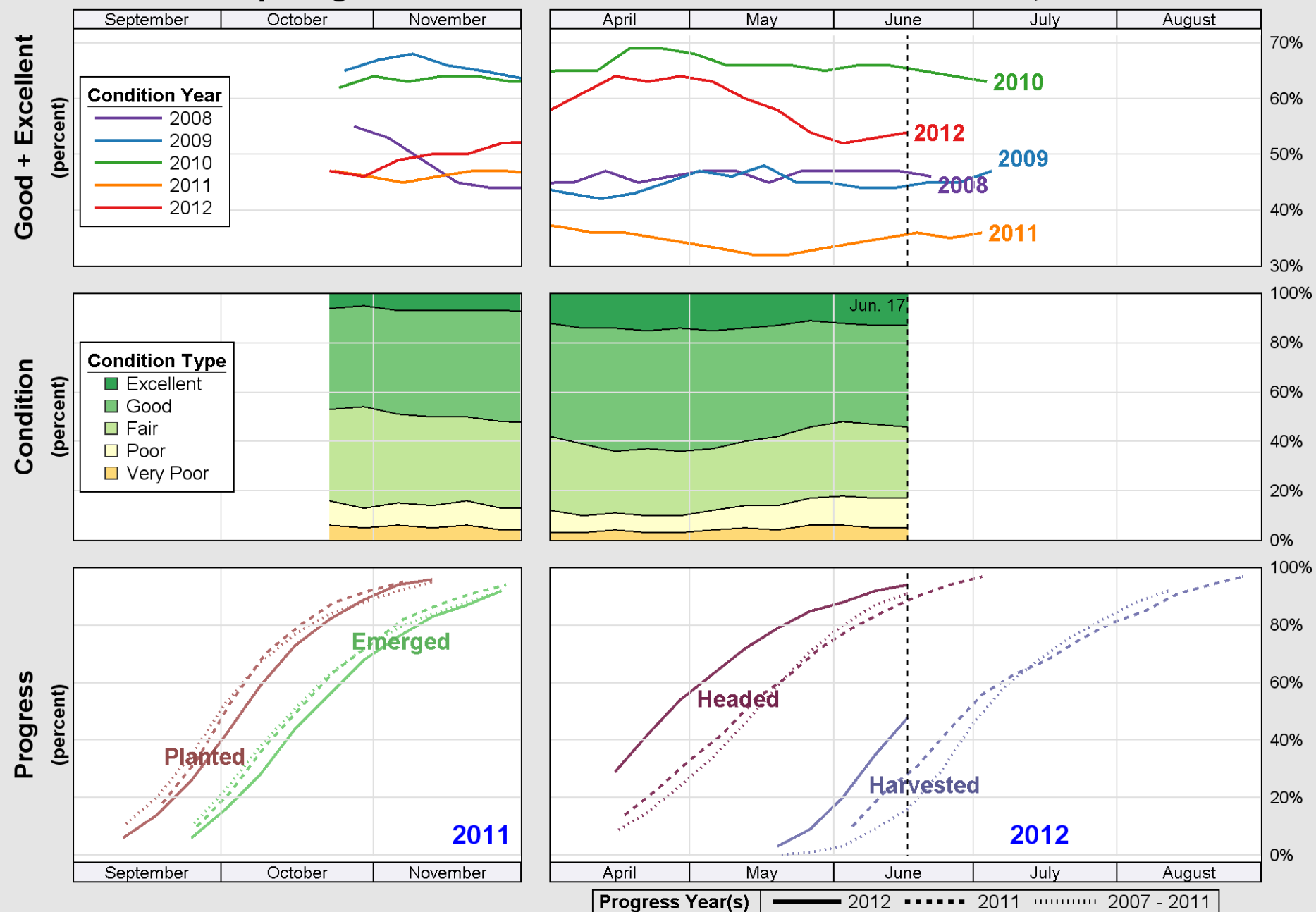


Source: National Agricultural Statistics Service (NASS), Crop Progress Report

USDA

Crop Progress and Condition: Winter wheat in United States , 2012

NASS



Source: National Agricultural Statistics Service (NASS), Crop Progress Report